



## Specifications:

Length: 12 m  
Breadth: 3.9 m  
Draught: 1 m  
Working deck: 6 x 3.90 m

Passengers (max.): 12 p  
Crew: 2 p  
Berths: 2 p

### Machinery / Propulsion

Main engine: Volvo Penta 74P 430 HP  
Cruise speed: 20 kn  
Maximum speed: 25 kn  
Operating range: 60 nm  
Bow thruster: 1  
Hydraulic winch: 1

### Electricity

220/230 V 24 V / 12 V 3 kW

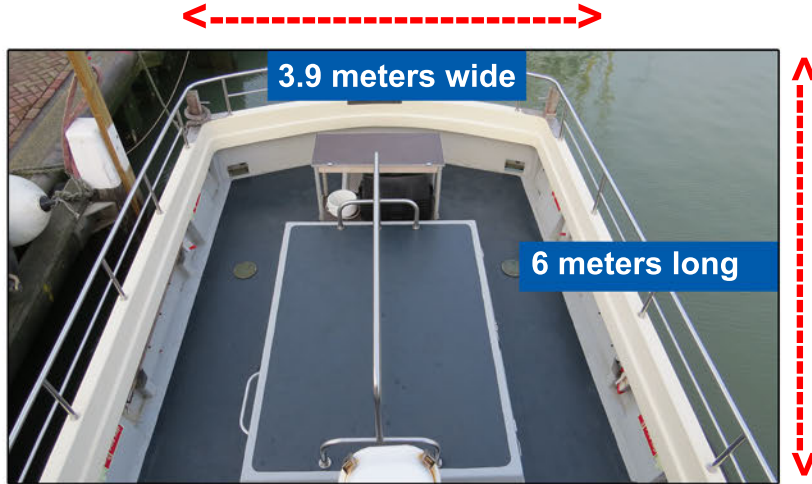
### Navigation and communication systems

Simrad CX44  
3 x GPS-DGPS  
Humminbird 1197CX SI combo side-scan sonar  
2 x video depth meters  
1 x radar + AIS  
1 x autopilot  
3 x VHF inc. DSC  
1 x handheld VHF GMDSS

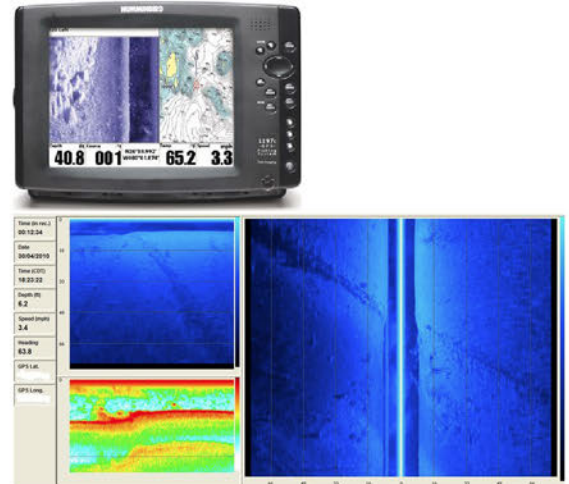
### Safety

1 x AED  
2 x 12p RDF lifeboat  
16 x life jacket  
2 x survival suit  
1 x SART  
1 x EPIRB  
2 x smoke canister  
20 x safety flare

## Working deck area



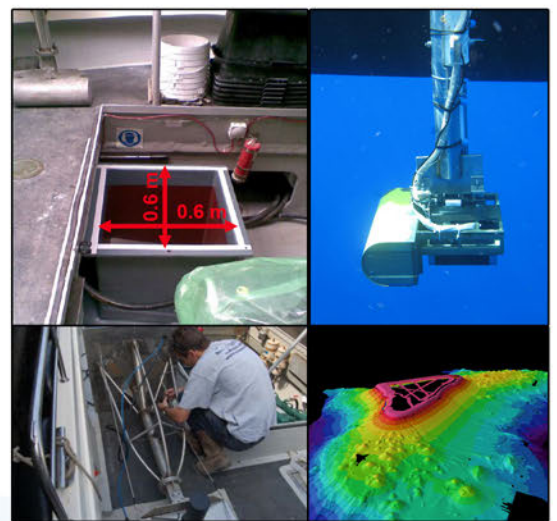
## Side-scan sonar



## Create a mobile office



## Install a multibeam



## Our references include

